


Samle- og installationsvejledning

Udendørs sauna infrarød Seattle



 Af sikkerhedsmæssige årsager bedes De venligst læse denne vejledning grundigt inden installation og brug.

Modtagelse

Kontroller ved modtagelsen, at saunaen ikke har synlige skader eller mangler. Saunaen kan have pådraget sig skader under transporten. Hvis saunaen har synlige skader ved modtagelsen, skal dette påpeges overfor transportøren og indskrives i fragtbrevet, for derefter straks at meddele det til butikken, hvor dette produkt er købt.

Reklamationer:

Vær opmærksom på at der kvitteres for modtagelse af INTAKT vare på fragtbrevet. Hvis du ønsker at modtage varen med forbehold, skal forbeholdet specificeres i detaljer på fragtbrevet inden kvittering.

Eksempel herpå kan være: Kolti nr. 1 ud af 2 mangler eller kasse nr 3 er ødelagt i nederste højre hjørne, tag gerne et billede derefter.



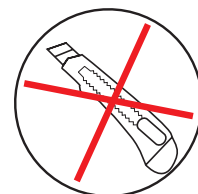
Udpakning

Vær forsigtig med udpakningen, så kabinen ikke ridses eller beskadiges på anden vis. Vær især forsigtig ved brug af hobbykniv eller lign.

Mener du at deres produkt har fejl eller mangler, bedes du kontakte butikken, der derefter vil kontakte Dansk Bademiljø for at anmelde en reklamation.

Du vil derefter blive kontaktet inden for 5 arbejdsdage af en tekniker, der telefonisk vil forsøge at lokalisere og afhjælpe dit problem.

Skønner teknikeren at et servicebesøg vil være nødvendigt, vil dette blive aftalt ved samme lejlighed.



Sikkerhed

Læs alle instruktioner.

1. Denne kabine bør ikke bruges af personer med reducerede fysiske, sensoriske eller mentale færdigheder, medmindre de har fået udførlige instruktioner i den korrekte anvendelse og betjening af kabinen.
2. Børn bør ikke lege i kabinen.
3. Hvis den elektriske ledning er beskadiget, skal den udskiftes af en elektriker eller anden autoriseret montør.
4. Brug ikke damp-, højtryksrensere eller vandsprøjt til at rense kabinen.
5. Karbonpanelerne må ikke afdækkes på grund af brandfare.
6. Kontroller saunaen for fejl eller skader inden brug.
7. Personer, der risikerer mén fra overophedning, f.eks. som følge af hjerte-kar-sygdomme, samt gravide, småbørn, ældre og personer, der bruger medicin bør rådføre sig med egen læge før brug af kabinen.
8. Hvis din hud rødmer mere end en dag efter brug af kabinen, skal du stoppe brugen af kabinen og søge læge.
9. Brug ikke saunaen, hvis du har indtaget alkohol eller beroligende medicin.
10. Overhold altid basale sikkerhedsforanstaltninger under opsætning eller brug af saunaen.
11. Sov ikke i saunaen mens den er i gang.
12. Brug ikke kemiske midler til rensning.
13. Opbevar ikke genstande på toppen af kabinen.
14. Tør hænderne før du bruger betjeningspanelet eller arbejder med de elektriske dele under opsætningen.
15. Forsøg ikke selv at reparere kabinen uden forud at have talt med en autoriseret reparatør.
16. Skulle det være nødvendigt at erstatte dele, bør det ske med originale reservedele.
17. Ledningssamlinger i væg, skal laves med krømpreflex.

Rengøring & vedligeholdelse

- Aftør saunaen med en fugtig klud før du bruger den for første gang. Hvis du oplever en kraftig lugt første gang, er dette normalt.
- Rens kabinen udvendig med en blød børste eller klud. Brug eventuelt en fugtig klud til at fjerne snavs, der ikke umiddelbart kan tørres af.
- Ridser og pletter i saunaen kan fjernes ved blot at bruge sandpapir af fin kvalitet over det beskadigede område. Vi anbefaler, hvis det er nødvendigt, at forsegle med en træbeskytter, træolie eller møbelpolish.

Parts list

1. Cradle base part A (2 pcs)



2. Cradle base part B (2 pcs)



3. Staves – 66pcs



4. Staves Type B – 2pcs



5. Staves with drain – 1pc



6. Top stave– 1pc



7. Front panel -1pc

8. Back panel - 1pc

9. Bench -1pcs



10. Waterproof timber -2 pcs



11. Floor plate -2 pcs



12. Heater Frame --2 pcs



13. Backrest - 4 pcs



14. Door handle – 1pc

15. Screws - 1set

1) For installing the staves(40pcs)



2) For installing the backrest,bench,outside timber(50pcs)



3) For installing the wooden frame for heater (20pcs)



6) Screws for connecting the stainless-steel ring, screws cap for fasten the screws (3pcs)



16. Stainless steel band –3pcs

17. Remote control -- 1pc

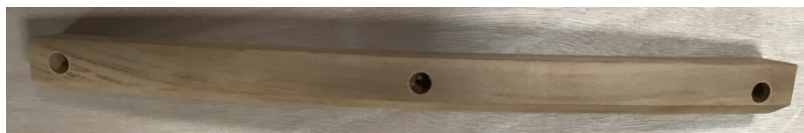
18. Spanner – 2pcs



19. Waterproof cloth -- 1pc

20. Asphalt shingles -- A certain number

21. Timber for fix the asphalt shingles -- 14pcs



FIRST CONSIDERATIONS

When you begin the initial layout for assembly, it is very important to check your floor or deck to see if it is level. Most garage floors, basement floors, and decks are sloped for drainage. If this is the case in your installation, it is suggested that you use shims to make the sauna level. Failure to do this can result in unplumbed panels, poor fit and or poor function of your sauna.

OUTDOOR INSTALLATION RECOMMENDATIONS

- Take caution to prevent the wind from catching and breaking the glass door.
- Do not install boards with knots on the top of the sauna where water could accumulate and freeze, causing the board to split.

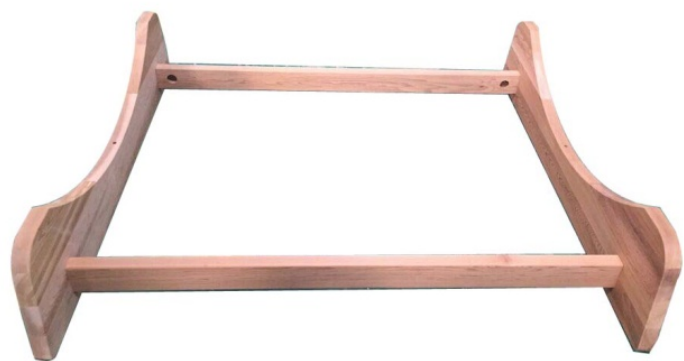
Place a cradle base at each end of the sauna so that it is even in from the end of the stove. This will facilitate proper placement of the stainless steel bands. Be sure the cradle bases are parallel to each other. Keeping everything level and square is very important to insure proper assembly and function.

Pls read this picture carefully before installation because all the special staves are marked with circle.

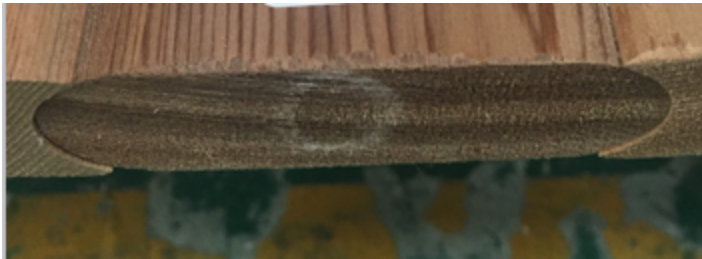
No. A5 & No. B5 are regular stave. As the benches are installed during production, there might be screw holes left. So it is better to put the original stave back. Pls refer to the picture below.



Step 1 : Connect cradle base part A (2pcs) with cradle base part B (2pcs) and create a sturdy base.



Step 2: Place the stave with strain exactly in the center of the cradle base to provide good drainage. Pls make sure the shape of the stave is exactly like the picture below. Lay out additional staves on each side of the drain stave to each end of the cradle base. **Using a framing square, make sure that all the staves are square to the cradle and that the croze is lined up on all pieces.** Use a rubber mal-let to gentle tap the staves together.



Step 3 : The front and back ends placed into the croze, begin alternatively placing staves up the sides of the sauna. Tap each board firmly to the next with a rubber mallet, and hammer a nail every 3 boards to keep them from falling out. The nails will be hidden by the bands, but the fewer nails you use now, the easier it will be if you ever need to dismantle and move the sauna. You should stop using nails half-way up the sides.

At this point, uncrate the front and back ends and place them in the croze on each end of the assembly .Use a level to be sure that the vertical boards on the end assembly are perfectly vertical, and that the horizontal brace boards holding the vertical boards together are facing the inside of the sauna. Using your level, check the horizontal boards on the insides of both ends to be sure that you have the panels plumb.



Rubber band is provided for easier installation. Pls be noted that the Stave Type B must be placed according to the picture below because of the extra piece to attach the bench.

Step 4: Place Top stave as the final piece as the picture shows. Pls make sure the shape of the stave is exactly like the picture below.



NOTE: While your Barrel Sauna is designed for outdoor use, it is important to build the sauna in accordance with these instructions to minimize water seepage into the sauna. Properly installed, water will not drip into the sauna. However, over time water may seep between the staves due to the porous nature of softwood. This will not hurt the sauna and will quickly evaporate once the sauna heater is turned on. If the water proofing is desired, shingles or other roofing material can be installed on the top section of the Barrel Sauna.

Step 5: Band Assembly --- Caution! Sharp Edge! Protective gloves needed.

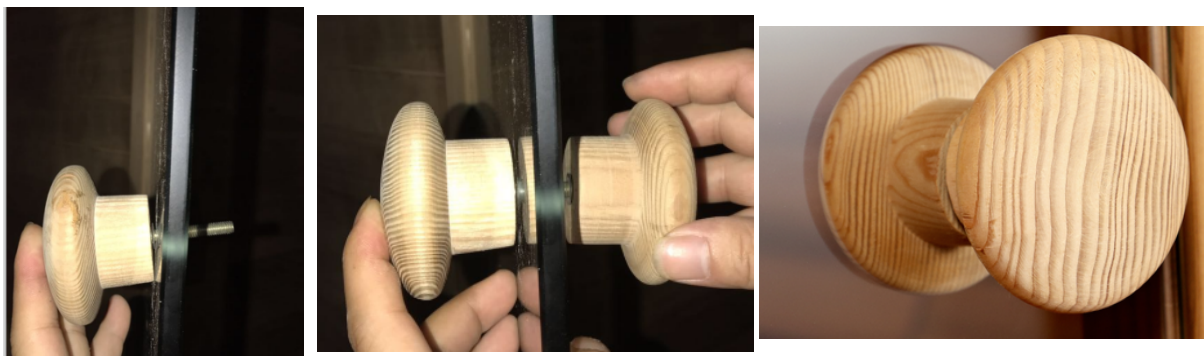
Each of the Band Assemblies are made of the following components:

- (1) stainless steel bands with brackets
- (2) nuts
- (3) threaded rod

Place bands with pre-assembled brackets around sauna, spaced evenly apart. The two end bands should cover the nails you used to hold the staves in place during assembly. Insert threaded rod through the bracket. Tighten nuts evenly so that the bands are of equal tension. Before tightening nuts, check to make sure bands are still even. Tighten nuts and install black vinyl thread protectors. You may place the brackets at the same level or vary them at different heights depending on our styling preference.



Step 6: Door Handle Assembly



Step 7: Bench Assembly

Each barrel sauna includes one bench. Fix the inside bench with screws provided.

Step 8 : Backrest Assembly

Each barrel sauna includes one backrest. Fix the backrest with screws provided.

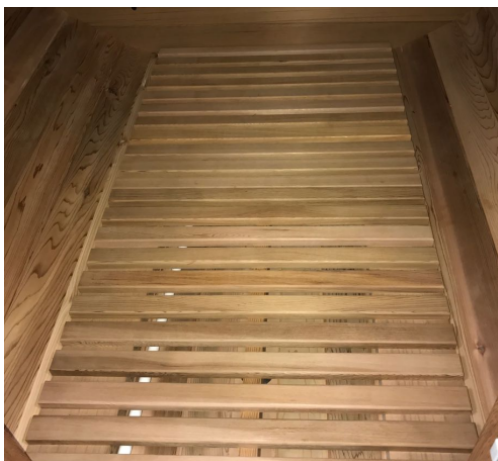
Step 9: Heater Frames Assembly

Each barrel sauna includes 2 heater frames. Fix the heater frames with screws provided.

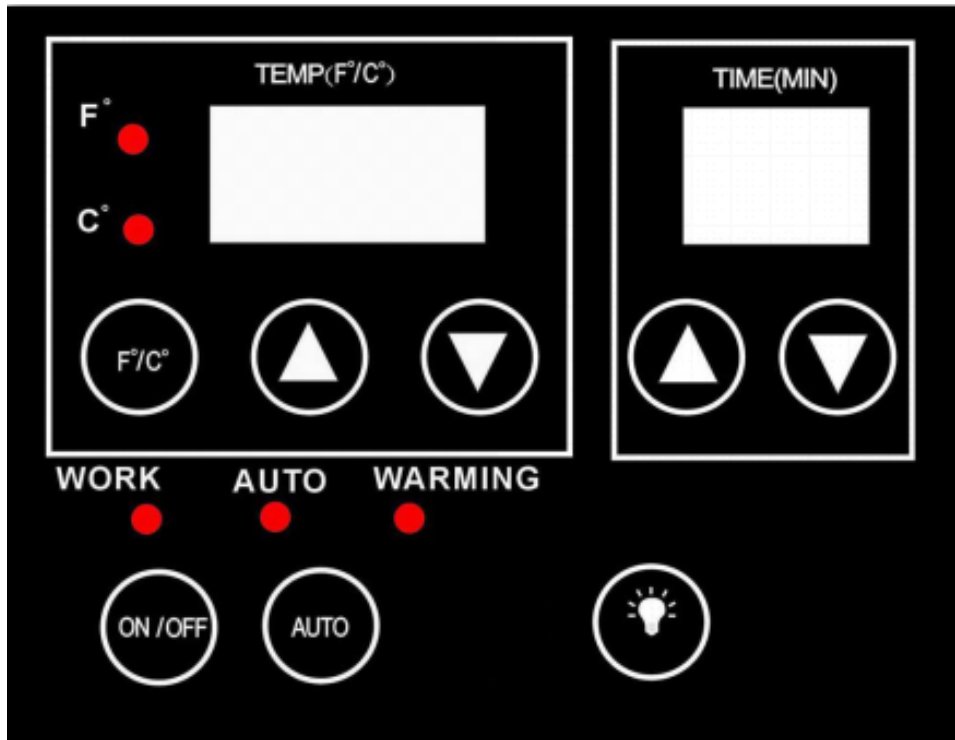
Step 10: Connect front heater wiring with the plug.



Step 11: Floor Assembly



Digital Control Panel Operating Instructions



1. Power on


Plug the main power cord into the wall outlet.

Press the “On/Off” button one time, the control panel is now operable, but the heaters are not on. You can now use the Bluetooth and lights.

2. Warming

Press “On/Off” button again, then the “Warming” light is on, which indicates the heaters are working. To turn off the sauna, press the ON/OFF button.

3. Lighting

The color lights can switch on/off by pressing the  button, changing the color with the remote control.

4. Pre-setting

“AUTO” button is for pre-setting the time you want your sauna to turn on. Press “AUTO” button once. Pre-set the time you want your sauna to turn on with the UP/DOWN ARROWS. TEMP UP/DOWN ARROWS are for hour setting and TIME UP/DOWN ARROWS are for minute setting. The setting range is 00:00-23:59.

Digital Control Panel Operating Instructions

1. Sauna Time Adjustment

Session time can be set between 0 and 90 minutes.

- a) Press TIME UP/DOWN ARROWS to adjust time, time value will increase or decrease by 1 minute at a time.
- b) By holding down the UP/DOWN ARROWS you can speed up the rate of change.
- c) Time light will be lit to indicate changes being made to time setting.
- d) If you don't input anything during 5 seconds, the TIME DISPLAY will stop flashing, the value will be stored in memory as preset value. Then the TIME DISPLAY value will show how much time is left in your sauna session decreasing 1 minute at a time.

2. Sauna Temperature Adjustment

Session temperature can be set between 67°F-158°F(25°C-70°C)

(Recommend temperature settings are between 100°F-130°F)

- a) Press TEMP UP/DOWN ARROWS to adjust temperature, temperature value will increase or decrease by 1 degree at a time.
- b) By holding down the UP/DOWN ARROWS, you can speed up the rate of change.
- c) °F(or °C) will be lit to indicate changes being made to temperature setting. If you don't input anything during 5 seconds, TEMPERATURE DISPLAY will stop; present value will be stored in memory as preset value and will be displayed at next start up. And the TEMPERATURE DISPLAY value shows the sauna room inside current temperature.
- d) During session time, when the temperature reaches the setting level on the control panel, "WARMING" indicator light will be off, micro-control will force the heaters to stop heating and keep a constant-temperature status. The heaters will turn off and on periodically in order to maintain the desired temperature inside the sauna.

3. Switch between °F and °C

You can alternate between Fahrenheit and Celsius while in setting mode by pressing °F / °C buttons.

Music System

There is a bluetooth equipment on the roof. You could connect to your electronic appliance and enjoy.

Kontakt

Dansk Bademiljø

Sigma 8, Søften
8382 Hinnerup
Danmark

Copyright © 2019 Dansk Bademiljø ApS
All rights reserved.